

“Business processes lead to financial entries – flawless, without distortion. You can always go back to the source of the information.”

In Exact Globe 2003, every financial transaction is linked to people, products and processes in the central database. These relationships enhance your company information, without requiring any additional steps.

Lower overhead, less searching, and information that is always up-to-date. Exact Globe 2003 is ready to stand up to the demands of the Sarbanes-Oxley Act for Corporate Governance.

Overviews are always connected to the underlying causes and transactions in the system. Clicking through provides you with immediate financial insight. Using the resulting management information, you are able to make prognoses, draw up plans and compile reports that are based on financial facts.

The home page for Exact Globe 2003 features tabs for your company’s various different components and processes. From Finance and Inventory to Manufacturing and CRM, as well as Purchase, Payroll and Projects. On top of operational functions, each tab also contains a variety of analytical tools that you can use to quickly formulate calculations, statistics, reports and evaluations. All information is linked to ensure that a change in one given component is automatically entered in the others, too. Managers have an additional ‘Management information’ tab at their disposal.

- All financial and logistic company information in a single central database.
- Establish connections between people, means, products and processes.
- Link documents (contracts, documentation, manuals) to products and projects.
- With the help of workflow functions, the status of processes is also immediately clear.
- Use roles and rights to set up access and responsibility.

As a monitor of performance Exact Globe 2003 shows you the state of affairs at your company. You have insight into the current status of key performance indicators. You decide which financial and operational indicators you need to be able to determine the status and value of your enterprise. And not after the fact or a lot of puzzling, but right away, in real-time.

- Up-to-the-minute insight into the company’s turnover, cash flow, current ratio and accounts payable.

Exact Globe 2003 for financials

- All of your company’s financial and logistic information in a single central transaction table.
- Plentiful information thanks to links between people, means, products and processes.
- Up-to-date insight into the cash flow, overall cash situation and value of your company.
- Various different functions for making prognoses, budgeting, analyzing and reporting.
- Transparent and traceable: ready for Corporate Governance and the General Food Law.
- Insight into historic, current and future cash flow.
- Management cockpit for authorizing and reporting.

“The accounts are actually just the beginning. Then comes the real-time monitoring, reporting and insight. The organization of our accounts is transparent.”



The Financial tab contains all the functions you need for real-time financial insight into your company.

- Insight into cash and bank balances, with liabilities and future payments also included.
- Use the MS Excel Add-in to calculate different price and budget scenarios.
- Compile initial versions of reports that can easily be updated later
- Pivot analyses enable you to approach your financial and logistic information from various angles.
- Audit trail makes traceability and monitoring easier after the fact. Quickly reconstruct processes, transactions and causes behind the financial facts.

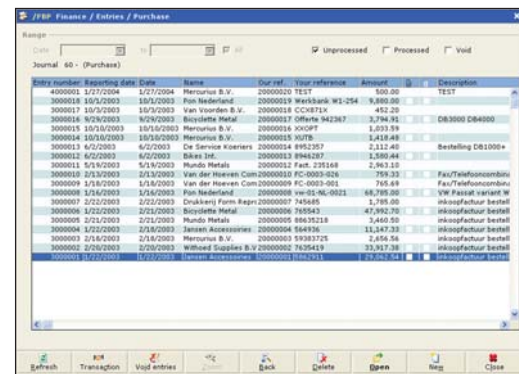
The Management Tab is the finishing touch in Exact Globe 2003. This component brilliantly showcases the array of information. All of your data is linked and saved centrally. Various reporting functions distill exactly the information you need. All of the functions that a manager needs to do his or her work quickly and commendably are grouped on a single special tab.

- Authorize incoming and outgoing payments, quotations, orders, sales, internal orders and hours worked.
- Direct access to frequently used tools for reporting and analysis.
- Various functions for concluding a period: inventory to be reconciled, purchase orders to be printed, projects to be completed, sales orders to be delivered, to be invoiced, and cash flow to be allocated/matched.

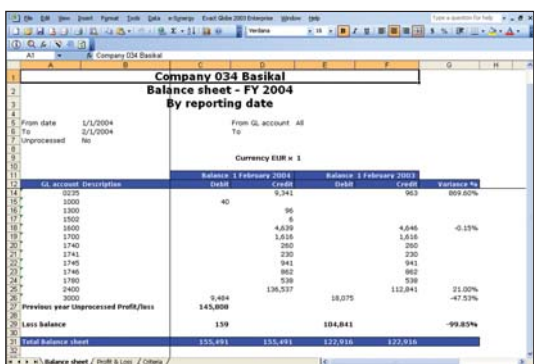
Exact Globe 2003 automates your entire production process, including the logistic and financial accounts. Company information is in real-time and centrally available. It increases the quality of your planning and management information, while reducing costs and the number of steps required.

For more information, download the Exact Globe 2003 product brochure (item SME0007EN) from www.exactsoftware.com.

Exact Software
info@exactsoftware.com



Purchase and sales orders can be monitored real-time as they are being processed by different departments throughout the organization.



Full integration with Microsoft Excel provides you with additional options for reports, and results can be graphically represented.

June 2005



SME0080EN

www.exactsoftware.com

